

Region 3 MS Bass Clarinet All-Region Scales

Scales must be performed by memory at the auditions

Concert B \flat (Bass Clarinet C)

Two staves of musical notation for the Concert B \flat scale. The first staff shows the ascending scale in 4/4 time, starting on C4 and ending on C5. The second staff shows the descending scale, starting on C5 and ending on C4, with a fermata over the final note.

Concert E \flat (Bass Clarinet F)

Two staves of musical notation for the Concert E \flat scale. The first staff shows the ascending scale in 4/4 time, starting on F3 and ending on F4. The second staff shows the descending scale, starting on F4 and ending on F3, with a fermata over the final note.

Concert A \flat (Bass Clarinet B \flat)

Two staves of musical notation for the Concert A \flat scale. The first staff shows the ascending scale in 4/4 time, starting on B \flat 3 and ending on B \flat 4. The second staff shows the descending scale, starting on B \flat 4 and ending on B \flat 3, with a fermata over the final note.

Concert D \flat (Bass Clarinet E \flat)

Two staves of musical notation for the Concert D \flat scale. The first staff shows the ascending scale in 4/4 time, starting on E \flat 3 and ending on E \flat 4. The second staff shows the descending scale, starting on E \flat 4 and ending on E \flat 3, with a fermata over the final note.

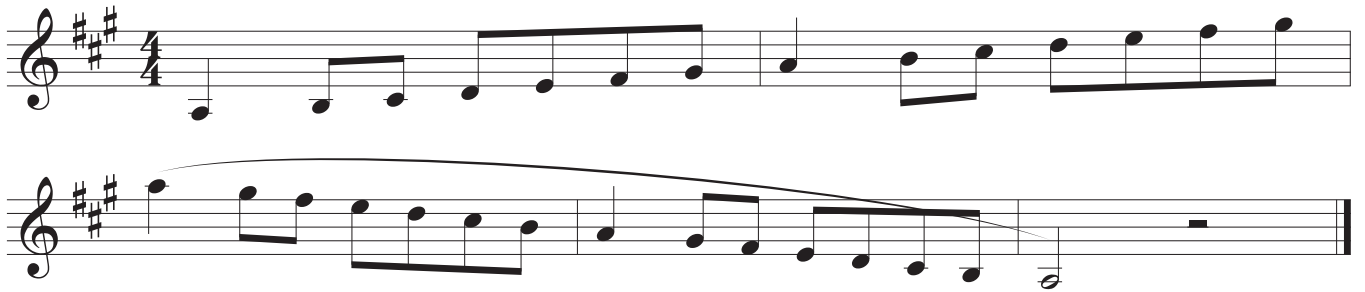
Concert F (Bass Clarinet G)

Two staves of musical notation for the Concert F scale. The first staff shows the ascending scale in 4/4 time, starting on G3 and ending on G4. The second staff shows the descending scale, starting on G4 and ending on G3, with a fermata over the final note.

Concert C (Bass Clarinet D)



Concert G (Bass Clarinet A)



Chromatic

