

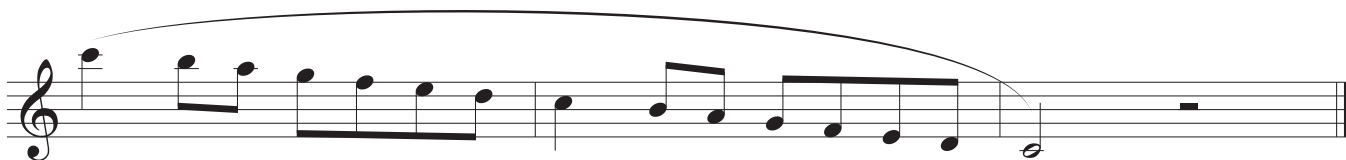
# Region 3 MS Alto & Bari Saxophone All-Region Scales

Scales must be performed by memory at the auditions

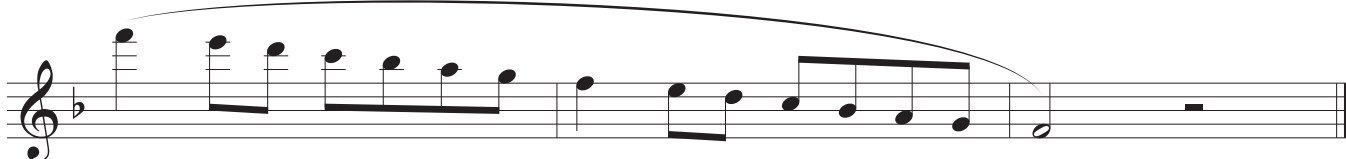
## Concert B $\flat$ (Alto & Bari Saxophone G)



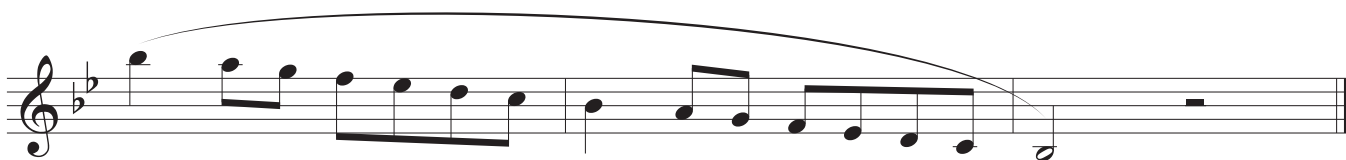
## Concert E $\flat$ (Alto & Bari Saxophone C)



## Concert A $\flat$ (Alto & Bari Saxophone F)



## Concert D $\flat$ (Alto & Bari Saxophone B $\flat$ )



## Concert F (Alto & Bari Saxophone D)

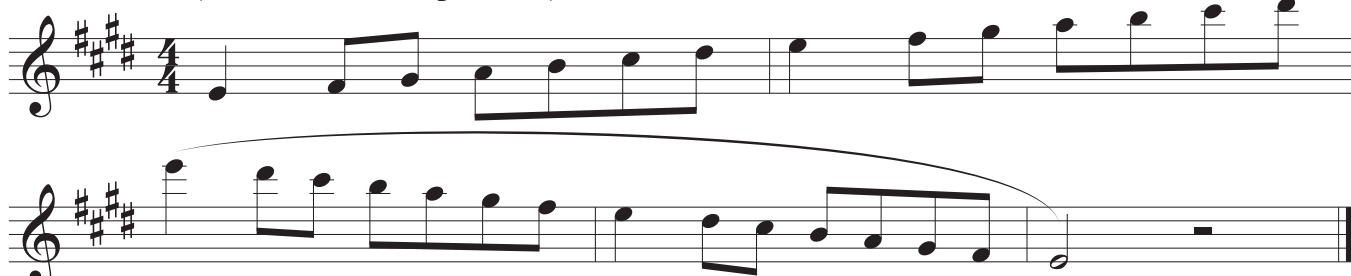


**Concert C (Alto & Bari Saxophone A)**



Musical notation for Concert C (Alto & Bari Saxophone A) in 4/4 time, key of C major. The scale consists of: C4, D4, E4, F4, G4, A4, B4, C5, B4, A4, G4, F4, E4, D4, C4. A slur covers the notes from G4 to C5.

**Concert G (Alto & Bari Saxophone E)**



Musical notation for Concert G (Alto & Bari Saxophone E) in 4/4 time, key of G major. The scale consists of: G4, A4, B4, C5, B4, A4, G4, F#4, E4, D4, C4, B3, A3, G3. A slur covers the notes from G4 to C5.

**Chromatic**



Musical notation for Chromatic scale in 4/4 time. The scale consists of: C4, C#4, D4, D#4, E4, E#4, F4, F#4, G4, G#4, A4, A#4, B4, B#4, C5, B4, B#4, A4, A#4, G4, G#4, F4, F#4, E4, E#4, D4, D#4, C4. Slurs are placed over the ascending and descending sequences.

# Region 3 MS Tenor Saxophone All-Region Scales

Scales must be performed by memory at the auditions

## Concert B $\flat$ (Tenor Saxophone C)

Two staves of music for the Concert B $\flat$  scale. The first staff shows the ascending scale: C4, D4, E4, F4, G4, A4, B4, C5. The second staff shows the descending scale: C5, B4, A4, G4, F4, E4, D4, C4. The scale is in 4/4 time and uses a treble clef.

## Concert E $\flat$ (Tenor Saxophone F)

Two staves of music for the Concert E $\flat$  scale. The first staff shows the ascending scale: F4, G4, A4, B4, C5, D5, E5, F5. The second staff shows the descending scale: F5, E5, D5, C5, B4, A4, G4, F4. The scale is in 4/4 time and uses a treble clef with one flat in the key signature.

## Concert A $\flat$ (Tenor Saxophone B $\flat$ )

Two staves of music for the Concert A $\flat$  scale. The first staff shows the ascending scale: B $\flat$ 4, C5, D5, E5, F5, G5, A5, B5. The second staff shows the descending scale: B5, A5, G5, F5, E5, D5, C5, B $\flat$ 4. The scale is in 4/4 time and uses a treble clef with two flats in the key signature.

## Concert D $\flat$ (Tenor Saxophone E $\flat$ )

Two staves of music for the Concert D $\flat$  scale. The first staff shows the ascending scale: E $\flat$ 4, F4, G4, A4, B4, C5, D5, E5. The second staff shows the descending scale: E5, D5, C5, B4, A4, G4, F4, E $\flat$ 4. The scale is in 4/4 time and uses a treble clef with three flats in the key signature.

## Concert F (Tenor Saxophone G)

Two staves of music for the Concert F scale. The first staff shows the ascending scale: G4, A4, B4, C5, D5, E5, F5, G5. The second staff shows the descending scale: G5, F5, E5, D5, C5, B4, A4, G4. The scale is in 4/4 time and uses a treble clef with one sharp in the key signature.

**Concert C (Tenor Saxophone D)**

Two staves of music in treble clef, key signature of one sharp (F#), and 4/4 time signature. The first staff contains the first four measures of the scale. The second staff contains the next four measures, with a slur over the final two measures.

**Concert G (Tenor Saxophone A)**

One staff of music in treble clef, key signature of two sharps (F# and C#), and 4/4 time signature. The scale is written across two lines of music, with a slur over the final two measures.

**Chromatic**

Four staves of music in treble clef, 4/4 time signature. The first two staves show the ascending chromatic scale with accidentals. The third and fourth staves show the descending chromatic scale with accidentals. Slurs are used to group the ascending and descending lines.