

Region 3 MS Trombone All-Region Scales

Scales must be performed by memory at the auditions

Concert B \flat



Concert E \flat



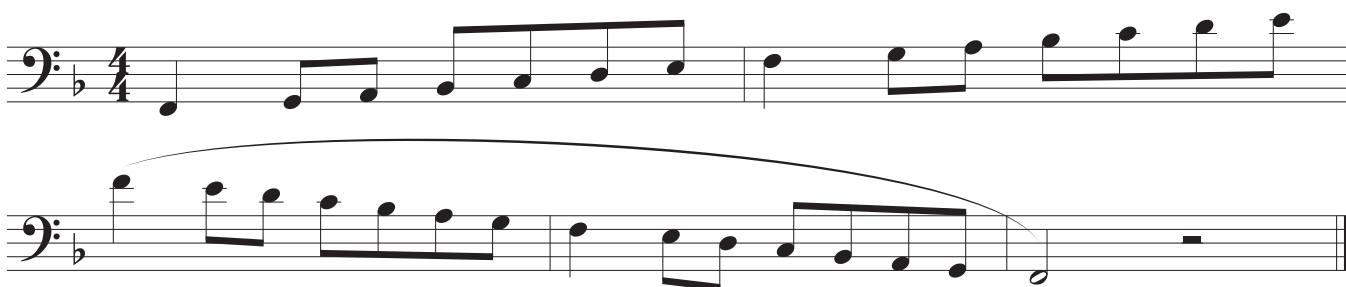
Concert A \flat



Concert D \flat



Concert F



Concert C



Concert G



Chromatic

The musical notation consists of three staves in bass clef, 4/4 time, with a key signature of one flat (B-flat). The first staff contains the first two measures of the scale, starting on G2 and moving up chromatically. The second staff contains the next two measures, continuing the chromatic ascent. The third staff contains the final two measures, completing the scale on G3. The notation includes various accidentals (sharps and flats) to indicate the chromatic movement and a final double bar line.