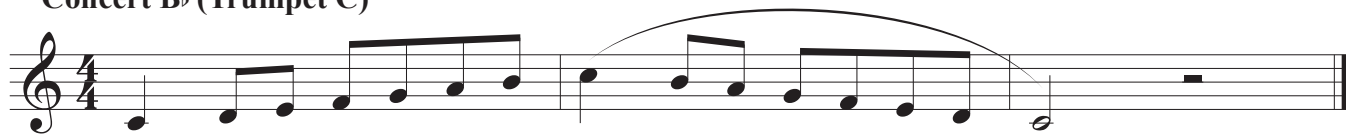


Region 3 MS Trumpet All-Region Scales

Scales must be performed by memory at the auditions

Concert B \flat (Trumpet C)



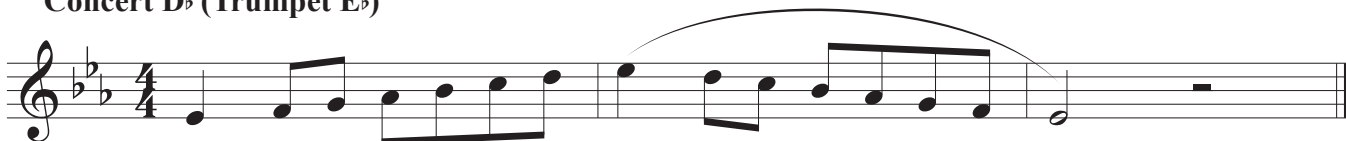
Concert E \flat (Trumpet F)



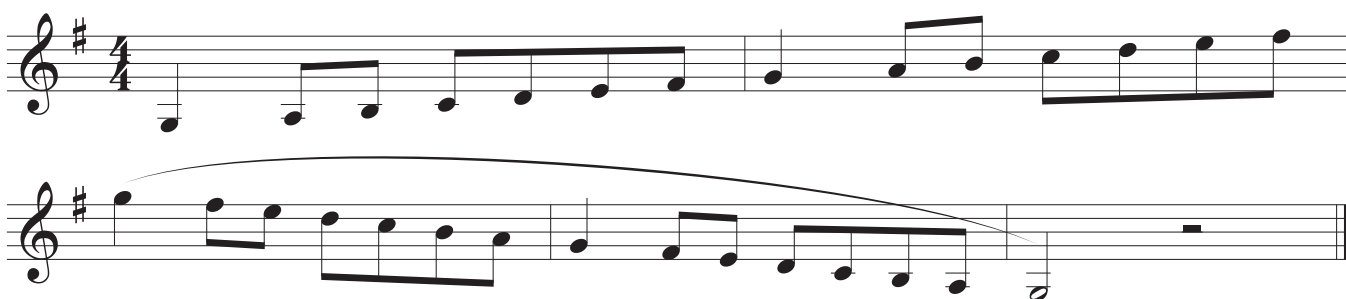
Concert A \flat (Trumpet B \flat)



Concert D \flat (Trumpet E \flat)



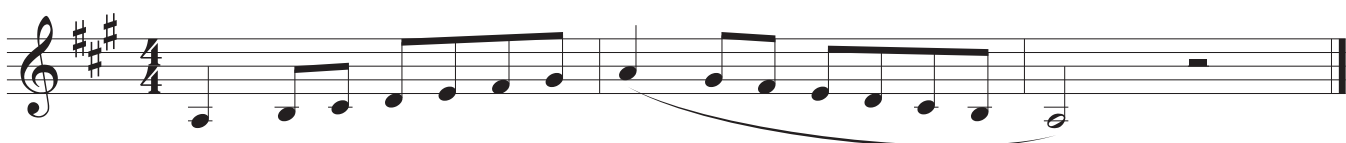
Concert F (Trumpet G)



Concert C (Trumpet D)



Concert G (Trumpet A)



The image shows three staves of musical notation for a chromatic scale in 4/4 time. The first staff begins with a treble clef and a 4/4 time signature. The scale starts on middle C (C4) and ascends chromatically through D4, E4, F#4, G4, A4, B4, and C5. The second staff continues the scale from C5 down to B4, then A4, G4, F#4, E4, D4, and C4. The third staff continues the scale from C4 down to B3, A3, G3, F#3, E3, D3, and C3. The piece concludes with a double bar line.